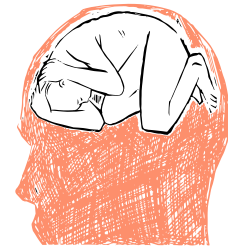
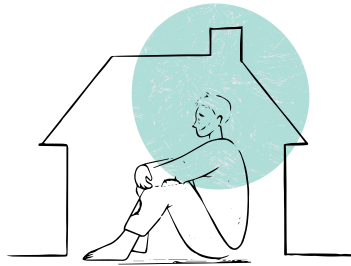
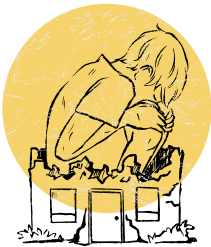


Do you have unusual experiences other people don't?

Have you been diagnosed with schizophrenia, schizoaffective or bipolar disorder?



If so, then you are invited to participate in an online research study about your experiences

What does it involve?

Quick eligibility phone screen

Interviews & Questionnaires about current & past mental health

2 Tasks about attention & memory

How long will it take?

1 Session over video

1.5-3 hours

Compensation will be provided

How do I see if I'm eligible?

email us to find out:
emb261@case.edu

include the subject line: "MAPE study"