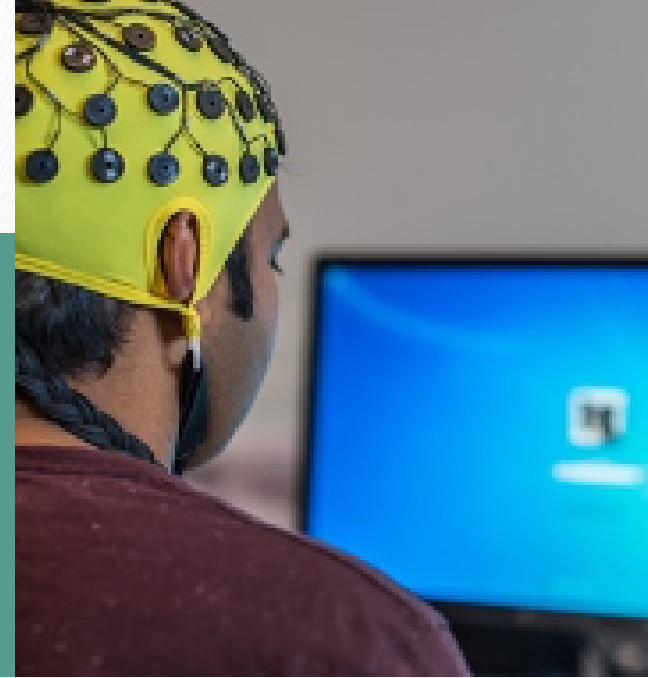




UCIRVINE



BIPOLAR DIAGNOSIS?

We need research participants

Julie Patterson, Ph.D. and her research associates at the University of California, Irvine are recruiting participants for a research study that will investigate brain function, symptoms, thinking, and genetics in bipolar disorder and their associations with nicotine use. Brain responses will be recorded using an electroencephalogram (EEG). This involves placing a cap with integrated sensors on the participant's head to record the electrical activity of the brain. The procedure is completely non-invasive and harmless.

WHY WE NEED YOUR HELP

This study represents a significant opportunity to contribute to the scientific community's knowledge of bipolar disorder. Participants will play a crucial role in furthering our understanding of this complex condition and potentially aid in the development of improved treatment strategies.

Eligibility Requirements

- Ages 18 - 65 years
- A Diagnosis of bipolar disorder

Participation Involves

- One visit to UCI Medical Center in Orange (approx. 4 hours)
- Interviews/questionnaires about symptoms, medical history, smoking status
- Recording brain responses to auditory stimuli using EEG
- Brief neurocognitive testing of attention memory and reaction times
- Collection of 26 ml of blood (approx. 2 teaspoons) for investigation of genetic variants

COMPENSATION
\$150 CASH

The University of California Irvine
Medical Center (UCIMC)
Orange, California

For more information, or to sign up,
contact

Lori Burri, Ph.D. at 949-396-0948

or

pattersonlab@hs.uci.edu

This project is supported by the
Tobacco-Related Disease Research
Program IRB#2007-5776